

AVT® EZ VALVE®

1.5" to 2" data sheet



**Advanced Valve
Technologies**

www.AVTFittings.com

Sales@AVTFittings.com

AVT EZ VALVE 1.5" TO 2"

The award-winning AVT EZ Valve is the best choice for emergency repairs and the smartest solution for planned and emergency pipeline maintenance on 1.5" to 2", diameter lines.

This inline insertion valve can be installed on horizontal or vertical lines. The AVT EZ Valve installs on an active line, so there is no need to turn off the water flow. This means fixing a line is fast, with fewer disruptions to businesses and residents and less cost and risk for owners and operators. On pipe diameters from 1.5" to 2", these valves normally can be installed in around an hour.

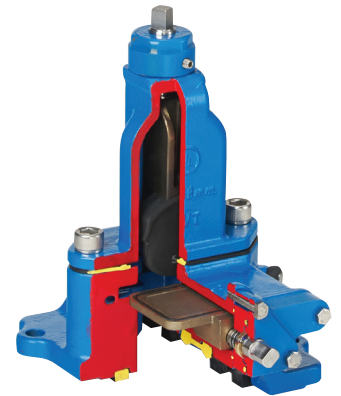
Ranked among the industry's most innovative solutions, the light and compact AVT EZ Valve is designed with a built-in isolation gate that allows the valve to be installed under pressure, a design feature that permits flow through the line while the repair is being made. It is durable, reliable, and certified to industry standards.

BENEFITS & VALUES:

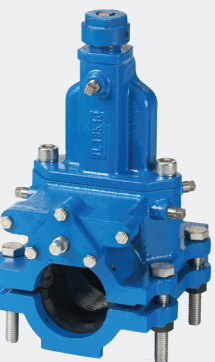
- No water shutoff required during installation
- No service interruption
- No fines for water shutoff
- No boil orders
- No customer notices
- No risk of plugging the line with a cut coupon
- No loss of pipe integrity
- Four times quicker to install than other valves on the market
- Enables one floor or area of a commercial or residential building to be isolated

APPLICATIONS:

- High-rise buildings
- Multiple occupancy buildings
- Hospitals
- Factories
- HVAC
- Commercial buildings
- Refining and petrochemical plants
- Commercial plumbing
- Water distribution



FEATURES



DESIGN

- Unique, patented technology
- Low profile design
- Ductile iron castings
- Integrated isolation valve
- Patented multichannel double-seal gaskets conform to irregular pipe geometries and sizes
- Sizes 1.5" to 2"

INSTALLATION

- Can be installed on all common pipe materials
- Installs at any angle
- Valve bonnet can be removed after a repair or remain in place as a permanent functioning valve

SAFETY

- Approved epoxy resin coated
- Stainless steel fasteners for secure positioning
- Rated at 100 PSI, (7 Bar)
- EZ Valve Components are WRAS Certified and UL Classified to NSF/ANSI Standard 61, Drinking Water System Components - Health Effects

INSTALL PROCESS



1

Prepare Insertion Site

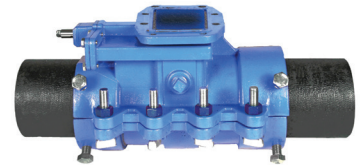
Prepare insertion site by lubricating the gasket and contact areas



2

Lubricate Gasket Sets & Channels

Lubricate gasket sets and gasket channels in casting bodies



3

Assemble Ductile Iron Castings

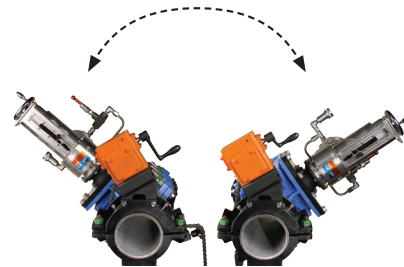
Assemble ductile iron castings with stainless steel fasteners to accept a pressure test and temporarily allow rotation for milling



4

Attach EM Machine

Check integral isolation gate is fully open, fit rotation assembly, attach EM machine and pressure test



5

Mill A Slot Over a 120° Path

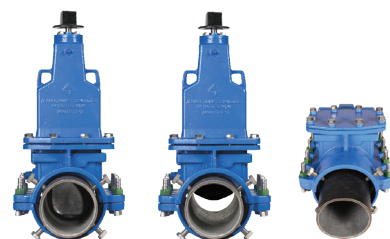
Maintaining system line pressure, mill a slot over a 120° path
(Note: The slot normally is cut to provide for vertical valve alignment, but the installer can select any position.)



6

Retract The Milling Head

Retract the milling head, close the integral isolation gate. Replace the EM Machine with the resilient wedge bonnet, remove the rotation assembly and tighten casting fasteners to specified torque values

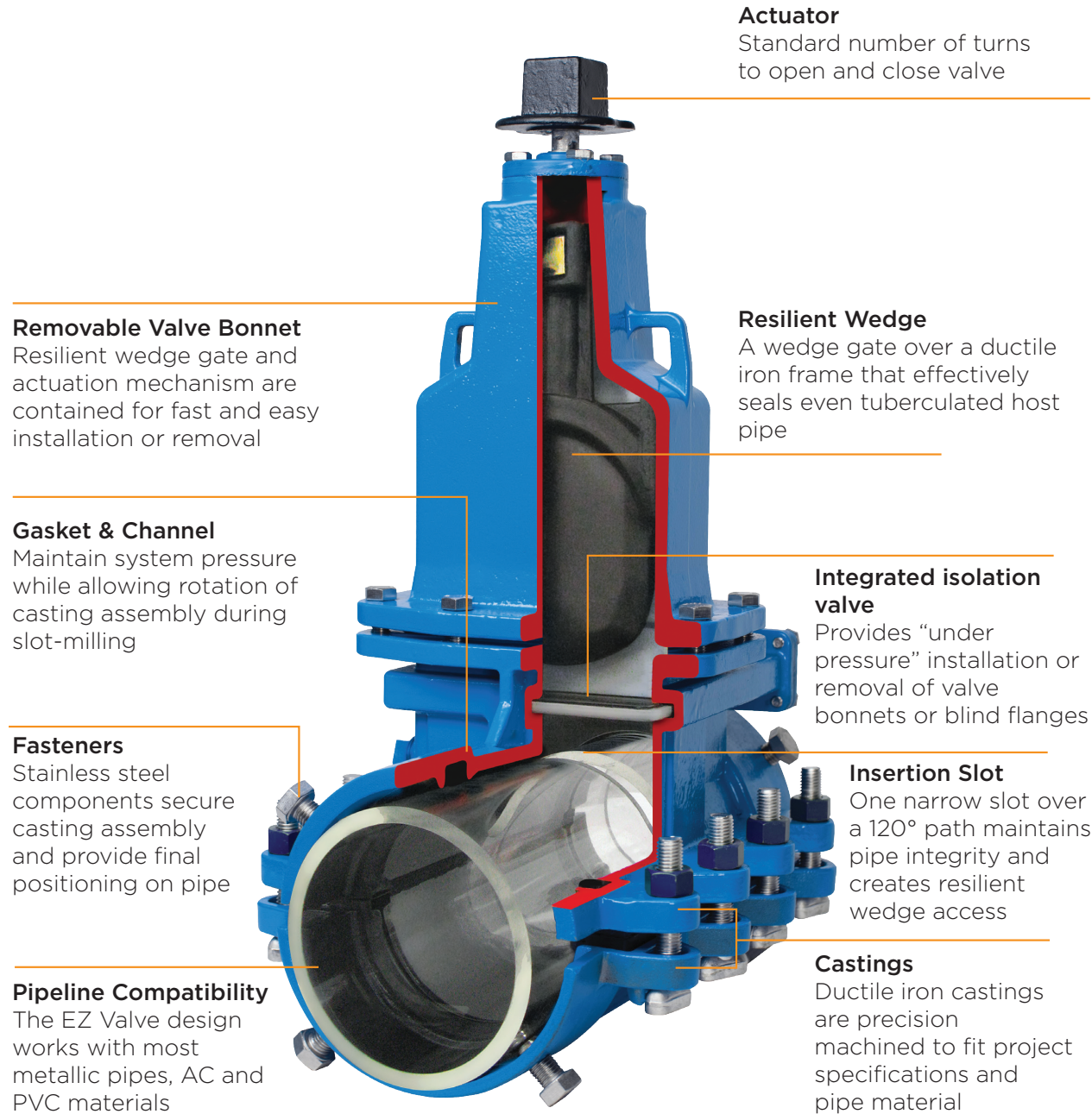


7

Open and Operate

Open the integral isolation gate and operate the AVT EZ Valve. For line stop applications, replace the valve bonnet with a blind flange using the integral isolation gate

CUT AWAY VALVE WITH KEY



1.5” - 2” EZ VALVE DIMENSIONS & DIAMETRICAL RANGE

WEIGHT

Size	Weight
1.5”	20lbs
2”	20lbs

DIAMETRICAL RANGE

Pipe Size	Diametrical Range
1.5”	1.80” - 2.00”
2”	2.20” - 2.60”

ROTATION CLEARANCE

Size	Below	Beside
1.5”	8”	16”
2”	8”	16”

SIZE

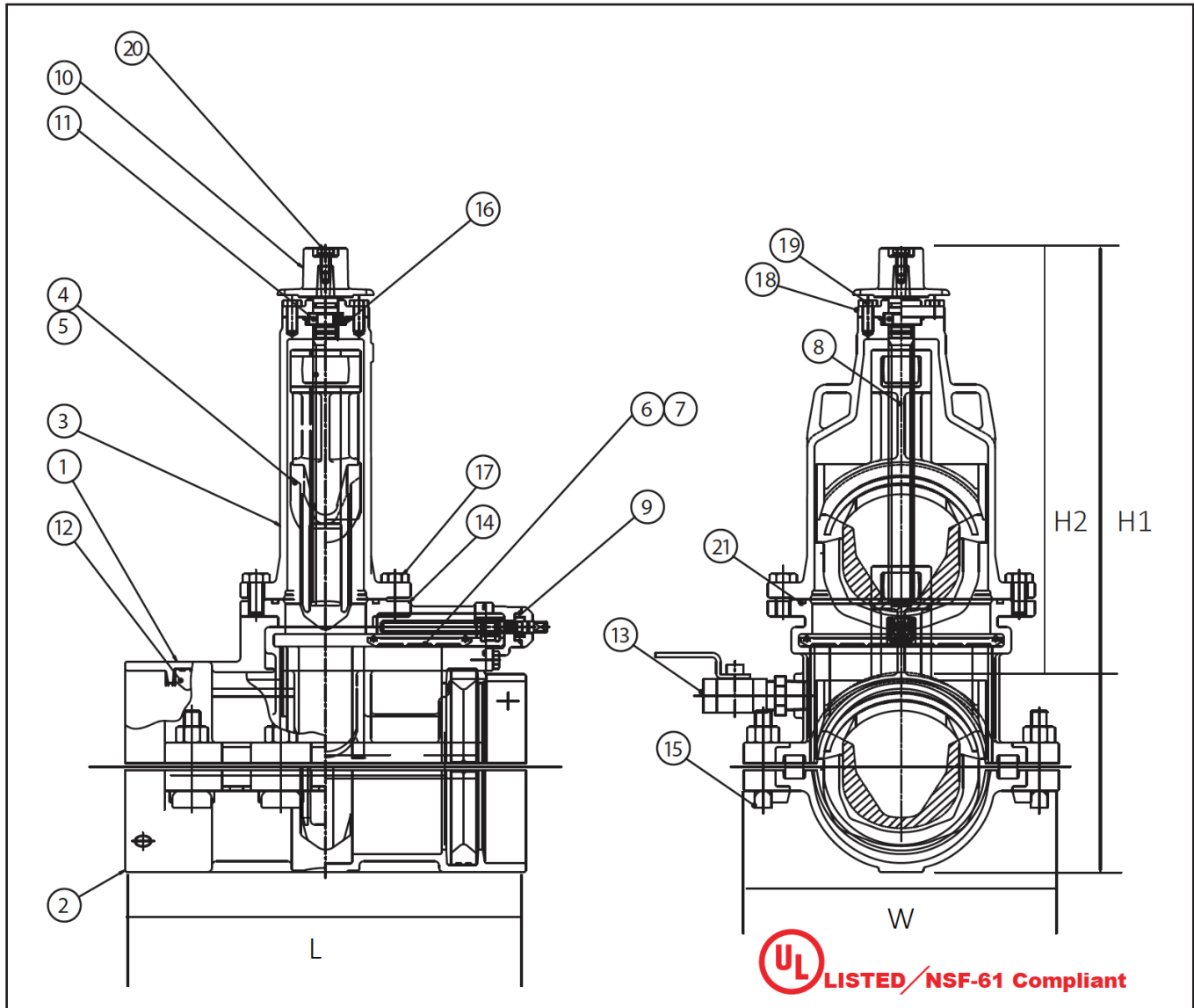
Size	Height (H1)	Height (H2)	Length	Width
1.5”	11.85”	9.36”	7.52”	6.22”
2”	11.85”	8.75”	7.52”	6.22”

INSTALLATION

Size	Clean Pipe
1.5”	34”
2”	34”

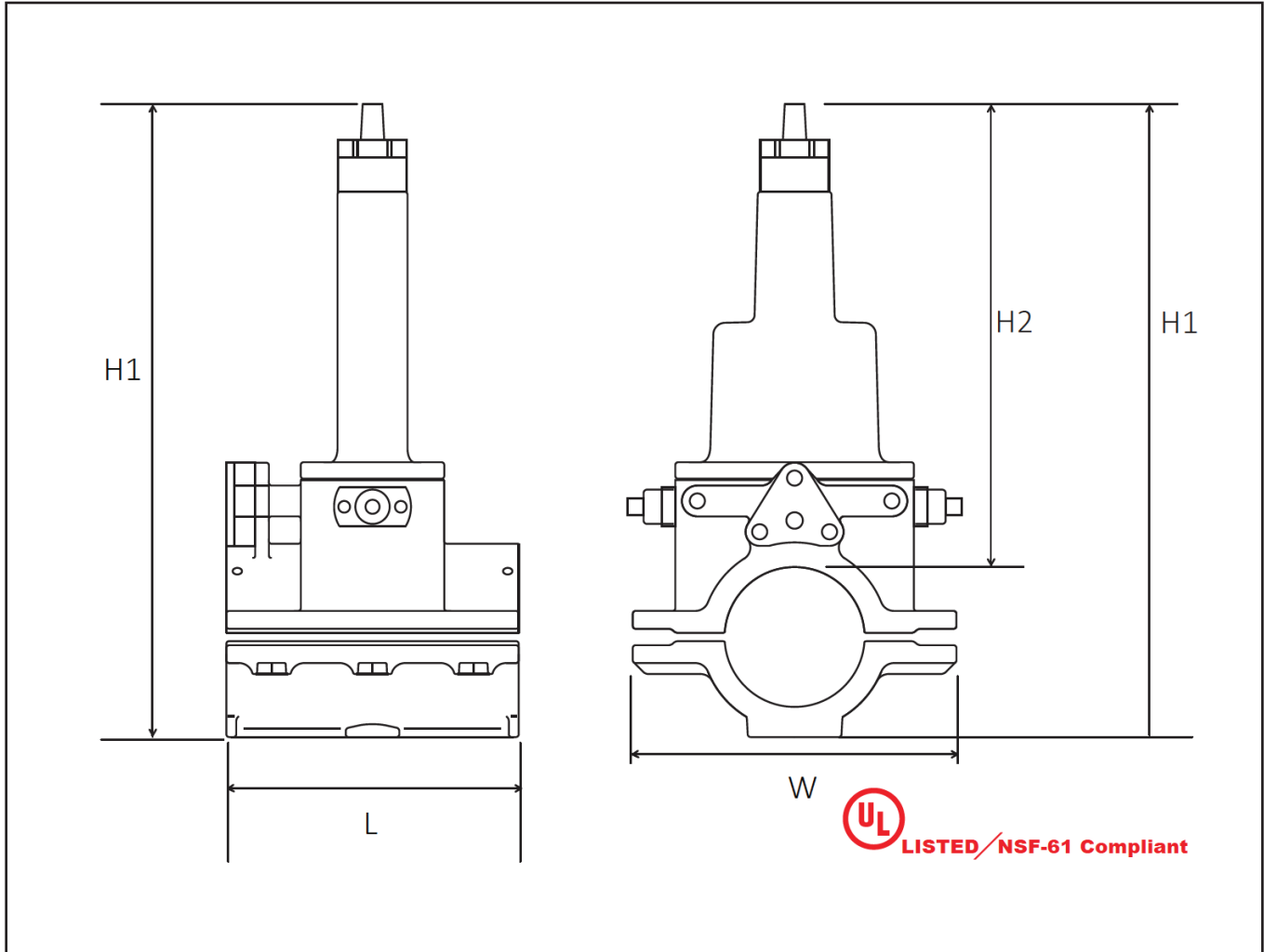
Clean, joint-free length of pipe required to allow for standard EZ Valve installation

1.5" TO 2" EZ VALVE SPECIFICATIONS



Item No	Description	Material
1	Upper Half of Body	DUCTILE IRON
2	Bottom Half of Body	DUCTILE IRON
3	Bonnet Body	DUCTILE IRON
4	Gate	DUCTILE IRON
5	Gate Rubber	EPDM
6	Isolation Gate	DUCTILE IRON
7	Isolation Gate Rubber	EPDM
8	Stem (Feed Screw)	STAINLESS STEEL
9	Isolation Gate Stem	STAINLESS STEEL
10	Wrench Nut	DUCTILE IRON
11	Set Collar	BRASS
12	Stem Nut	BRONZE
13	Isolation Gate Stem Nut	BRONZE
14	Gasket	EPDM
15	Chip Flushing Port	
16	EM Cutting Port	
17	Sacrificial Anode Bolts/Nuts	DUCTILE IRON WITH ZINC ANODES
18	O-Rings	BUNA-N
19	Bonnet Bolts	STAINLESS STEEL
20	Packing Gland	DUCTILE IRON
21	Packing Gland Bolts	STAINLESS STEEL
22	Bolt for Wrench Nut	STAINLESS STEEL
23	Bonnet O-Ring	EPDM

1.5" TO 2" EZ VALVE CUT SHEET



SPECIFICATIONS

1. Bottom Half Body: DI. ASTM A536 65-45-12
2. Upper Half Body: DI. ASTM A536 65-45-12
3. Bonnet: DI. ASTM A536 65-45-12
4. Gate: Bronze C954
5. Gate Rubber Coated: EPDM ISO 4097:2014
6. Stem: Stainless Steel 17-4PH
7. Gasket: BUNA-N ASTM D2000
8. Set Collar: Bronze C954
9. Wrench Nut: DI. ASTM A536 65-45-12

Warranty: A One Year warranty covers parts and labor for Equipment and Valves (Excluding Perishable Tooling and O-Rings) barring misuse or lack of routine maintenance.

ILLINOIS

800 Busse Road
Elk Grove Village, IL 60007
P: +1 847 364 3700
F: +1 847 364 8883

ILLINOIS

12601 South Homan Ave
Blue Island, IL 60406
P: +1 708 489 4901

www.AVTFittings.com Sales@AVTFittings.com

Advanced Valve Technologies (AVT) is part of ClockSpring|NRI, the high-performance critical infrastructure solutions company. AVT's advanced solutions are based on simple designs that minimize risk to the environment and reduce costly downtime. Our primary focus is on disruptions in water service that cost providers money and leave end users without service.

EZ Valve® is a registered trademark of Advanced Valve Technologies LLC.
© 2022 Advanced Valves Technologies, LLC. All rights reserved.



**Advanced Valve
Technologies**

V: 09.29.2022