



# Primers

CSNRI Composites offers a wide range of primers designed to work in concert with our engineered composite repair systems across a wide range of applications for both temperature ranges and chemical compatibilities. Whether you need a primer material for high-temperature applications, harsh chemical environments, or bonding needs, we have a solution for you.

## APPLICATIONS

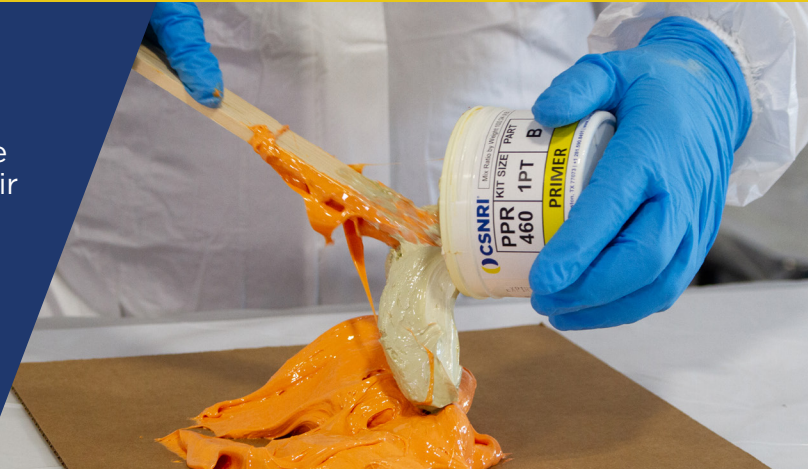
High bond strength, workable, primer systems are used within CSNRI's non-metallic composite repair systems as a critical component to their success and effectiveness. They perform the following functions for the repair system:

- Bonding agent and promoter between pipe and composite
- Load transfer between pipe and composite
- Effective corrosion prevention barrier
- First contact protection against internal chemicals which may come into contact with the repair system

## COMPLIANT WITH:

(standards/regulations)

- US DOT CFR 192 and 195
- CSA Z662
- ASME PCC-2 Article 401
- ISO 24817



## ASSOCIATED SYSTEMS

- **PPR-220:** Atlas™, Atlas™ UA, A+ Wrap™, A+ Max™, DiamondWrap®, SynthoGlass® XT, ThermoWrap®
- **PPR-290:** Atlas™, Atlas™ UA, A+ Wrap™, A+ Max™
- **PPR-460:** Atlas™ HT, DiamondWrap® HT, ThermoWrap® HT
- **PPR-580:** DiamondWrap® UHT
- **PPR-590:** ThermoWrap® 500

## CSNRI Primers Properties

	PPR-220	PPR-290	PPR-460	PPR-580	PPR-590
<b>Stock Sizes Available</b>	2-Gallon	2-Quart	1-Pint	1-Pint	8"x30'/20 SQFT
	1-Quart	2-Gallon		1/2-Pint	4"x30'/10 SQFT
	16 OZ				2"x15'/2.5 SQFT
	4 OZ				
<b>Coverage Rate (ft<sup>2</sup>/Gallon)</b>	53	53	53	80	N/A
	<b>(m<sup>2</sup>/Gallon)</b>	4.9	4.9	4.9	7.4
<b>Application Thickness Range (inch)</b>	0.01-0.03	0.01-0.03	0.01-0.03	0.01-0.02	0.026
	<b>(mm)</b>	0.254-0.762	0.254-0.762	0.254-0.762	0.254-0.508
<b>Mix Ratio (By Weight)</b>	4:1	1:1	3:1	Single Component	Pre-impregnated Fiber Roll
<b>Working Time (Min.)*</b>	60	30	360	Heat Cure Required	Heat Cure Required
<b>Set Time (Min.)*</b>	90	120	480	Heat Cure Required	Heat Cure Required
<b>Glass Transition Temp. (°F)</b>	230	200	485	651	575
	<b>(°C)</b>	110	93.3	251.7	344

**\*Working Time and Set Time are expected time when installed on pipe at 75°F in their thin film usage rates.**

**WARRANTY** CSNRI routinely implements product improvements. Please contact your local distributor or office for the most current product specifications. CSNRI warrants the quality of this product when used according to directions.

PS\_0623

**ISO 9001 Certified**

Sales@cs-nri.com | CSNRIcomposites.com

Clock Spring is a licensed trademark of NCF Industries, Inc.  
© 2023 CSC Operating Company, LLC. All Rights Reserved.

